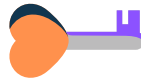




# You are the key

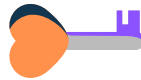
*The 4 S's of emotional support*

Safe



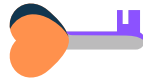
**I protect the children I serve from harm and avoid becoming a source of threat or fear.**

Seen



**I see myself and the children I serve through the lens of wholeness.**

Soothed



**I am responsive and model calm and inner-peace.**

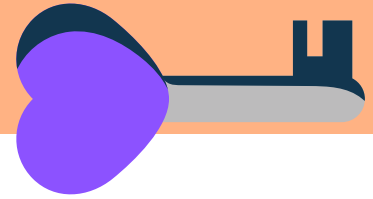
Secure



**I create an environment of trust and provide a learning base for self-regulation and empowerment.**

# You are the key

*The 4 S's of emotional support*



## Safe

**I protect the children I serve from harm and avoid becoming a source of threat or fear.**

## Seen

**I see myself and the children I serve through the lens of wholeness.**

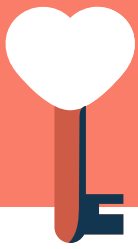


## Soothed

**I am responsive and model calm and inner-peace.**

## Secure

**I create an environment of trust and provide a learning base for self-regulation and empowerment.**



# You are the key

*The 4 S's of emotional support*



## Safe

**I protect the children I serve from harm and avoid becoming a source of threat or fear.**



## Seen

**I see myself and the children I serve through the lens of wholeness.**



## Soothed

**I am responsive and model calm and inner-peace.**



## Secure

**I create an environment of trust and provide a learning base for self-regulation and empowerment.**

© 2020 All rights reserved. [kristiepf.com](http://kristiepf.com)